

# OKAYAMA UNIVERSITY



With an aim of meeting the needs of society, Okayama University nurtures distinguished and highly specialized professionals who have leading qualities and abilities in various new interdisciplinary fields. This is based on its promotion of research that is oriented towards a high level of interdisciplinary and integrated collaboration, which it achieves by utilizing its distinctive and comprehensive graduate school education system.

Number of Staff		Number of Students	
As of May 1, 2015		As of May 1, 2015	
Professors	475	Undergraduate Students	10240
Associate Professors	385	Graduate Students	2949
Senior Assistant Professors	124		
Assistant Professors	530	<b>Total</b>	<b>13189</b>
Research Associates	10		
Teachers	106		
Sub Total	1630		
Clerical Employees	2334		
Technical Employees			
<b>Grand Total</b>	<b>3964</b>		

## Basic Data

### Okayama University

- Graduate Schools
  - Graduate School of Education
  - Graduate School of Humanities and Social Sciences
  - Graduate School of Natural Science and Technology
  - Graduate School of Health Sciences
  - Graduate School of Environmental and Life Science
  - Graduate School of Medicine, Dentistry and Pharmaceutical Sciences
  - School of Law

- Faculties
  - Faculty of Letters
  - Faculty of Education
  - Faculty of Law
  - Faculty of Economics
  - Faculty of Science
  - Medical School
  - Dental School
  - Faculty of Pharmaceutical Sciences
  - Faculty of Engineering
  - Faculty of Environmental Science and Technology
  - Faculty of Agriculture
  - Matching Program Course

## Organization

### GLOBAL GATE FOR LEARNING

#### Our Mission

“Creating and fostering higher knowledge and wisdom”

How can we, the human race, develop and grow in a steady and sustainable manner for the sake of future generations? At Okayama University, we feel we have the answer. It is imperative that we build up our knowledge base in order to advance in the field of education and research. As a public institution of higher learning, we are committed to contributing to this advancement by providing a positive environment for the creation of higher knowledge through research and the passing on of wisdom to younger generations through education and community service.

#### Our Purpose

“Building up a new paradigm for a sustainable world”

As one of the leading universities in Japan, we aim to create and establish a new paradigm for the sustainable development of the world. We are being confronted with problems of global resources in terms of the environment, energy issues, food supplies, economics, health, security and education. Thus, we are constantly seeking ways for humans to co-exist in harmony with nature. With this in mind, our university offers a wide range of academic fields, which become the basis of the integrated graduate schools. This not only allows us to conduct the most advanced and up-to-date research, but also provides an enriching educational experience.

#### Our Goals

- For education To develop graduates who can think critically and logically and who can contribute to society.
- For research To become one of the leading research institutions recognized all over Japan and the world.
- For society To offer a wide range of knowledge and technologies which can be used to help solve the problems of today's society. At the same time, we promote collaboration with the outside community.
- For administration Better use of the resources from our own faculties, staff, and facilities.
- For self-evaluation To evaluate our work constantly in every field, including research, education, contribution to society, and university management for future university reform.



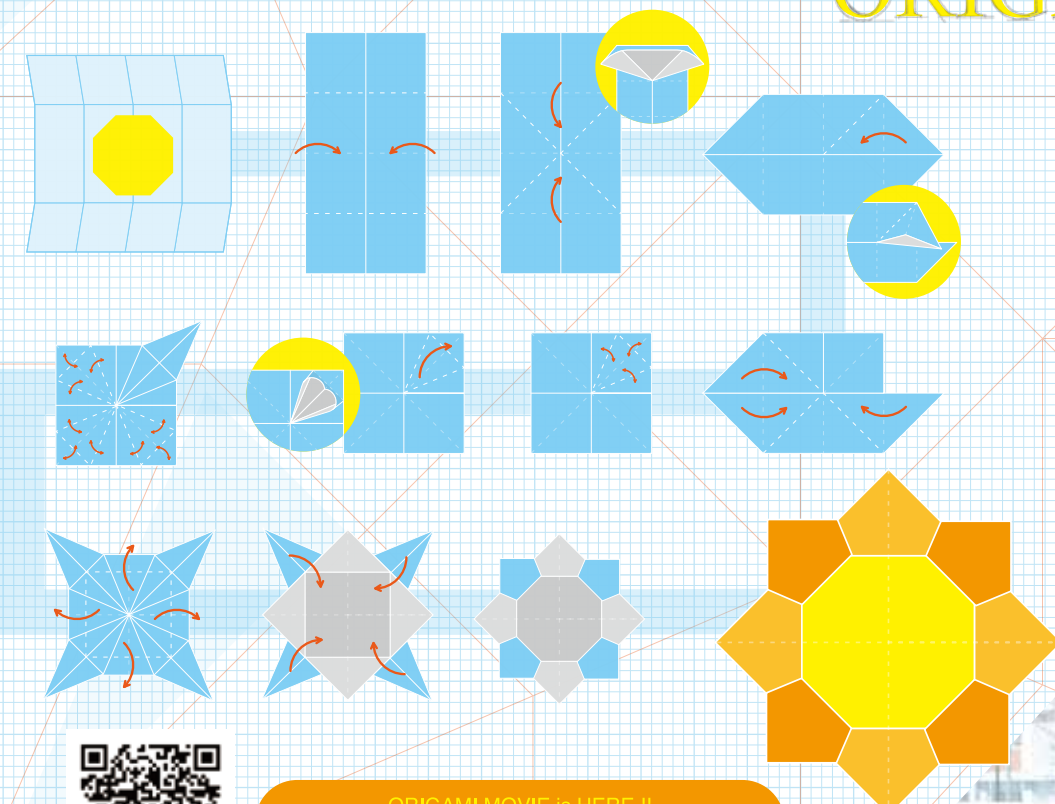
OKAYAMA UNIV.

## ORIGAMI

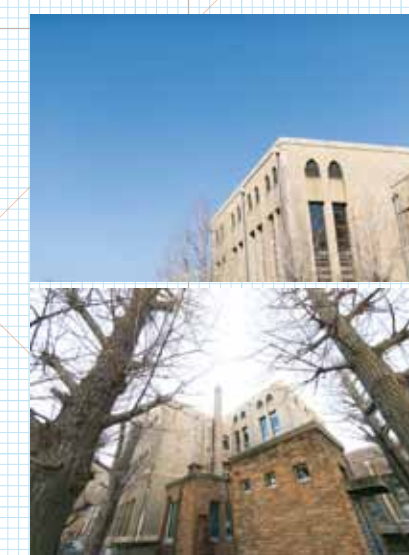
## Campus

Origami, the art of paper folding, is a symbol of Japanese culture. It represents the imagination, subtle creativity, and attention to detail of the Japanese people. Even this paper can be transformed into something wonderful!

Follow the directions below to see “The Land of Sunshine”!



ORIGAMI MOVIE IS HERE !!  
<https://www.youtube.com/user/okayamauniypr>



A plaza with pleasant shade allowing people to casually relax and interact with each other

Junko Fukutake Hall  
A modern-style glass hall for open community use

Junko Fukutake Terrace  
An open community terrace with a cafe

You can find both exquisite contemporary buildings making great use of glass and curves (designed by SANAA\*) and traditional historic buildings dating from around 1900.

SANAA ...  
 Sejima and Nishizawa and Associates - winners of the Pulitzer Prize for architecture in 2010. Among their works are the Louvre-Lens, a satellite museum of the Louvre (France), and the 21st Century Museum of Contemporary Art in Kanazawa (Japan).

Founded in 1870 as the medical school of Okayama Prefecture, Okayama University Hospital has a famed history of over 140 years. It holds the proud position of being one of Japan's leading transparent centers, being able to handle any type of organ transplant. Their record of successful lung transplants is at the top worldwide. It is also an important base hospital in East Asia for congenital heart disease surgery.

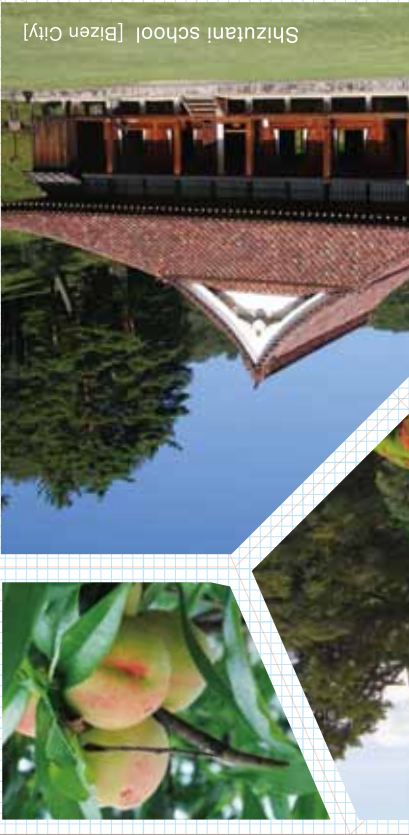


Okayama University is a national university with eleven faculties, a cross-faculty studies program, and seven graduate schools, covering humanities and the social sciences, natural sciences, life (medical) sciences and education. The university was selected to be part of the Japanese Ministry of Education, Culture, Sports, Science and Technology (MEXT)'s "Top Global University Project," which promotes educational innovation and global competitiveness in order to foster students' ability to actively contribute to international society. Moreover, we are fortunate to have been selected for "The Program to Promote the Enhancement of Research Universities." Having made groundbreaking accomplishments in many fields, we are constantly expanding our role as a global research base.

# JAPAN + OKAYAMA UNIVERSITY

Okayama University is a national university with eleven faculties, a cross-faculty studies program, and seven graduate schools, covering humanities and the social sciences, natural sciences, life (medical) sciences and education. The university was selected to be part of the Japanese Ministry of Education, Culture, Sports, Science and Technology (MEXT)'s "Top Global University Project," which promotes educational innovation and global competitiveness in order to foster students' ability to actively contribute to international society. Moreover, we are fortunate to have been selected for "The Program to Promote the Enhancement of Research Universities." Having made groundbreaking accomplishments in many fields, we are constantly expanding our role as a global research base.

Okayama University, situated near downtown Okayama City, is just two kilometers from Okayama Station, making it an easy commute. Despite being in the heart of the city, the sprawling campus, with its lush greenery, has a quiet atmosphere conducive to study and research. Okayama Station is a key terminal drawing together the main railroads of western Japan. Shikoku areas, it is always bustling with people. Tokyo and Osaka are within an hour by bullet train.



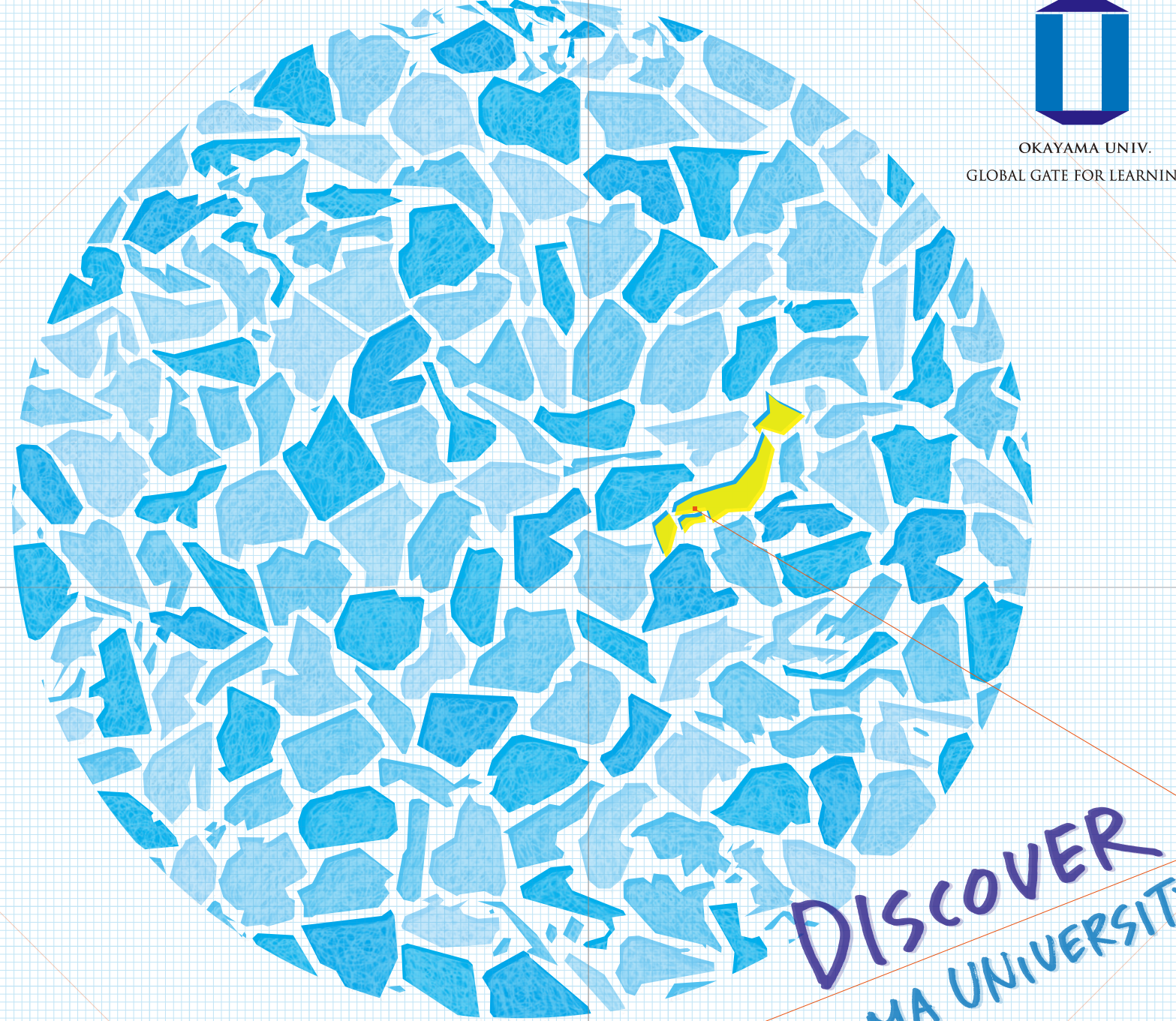
**Number of International Students**  
As of May 1, 2015

Asia	449
China / Korea / Vietnam / Malaysia / Indonesia / Bangladesh / Thailand / Myanmar / Taiwan / India / Mongolia / Philippines / Sri Lanka / Pakistan / Cambodia	
The Middle East	7
Turkey / Saudi Arabia	
Africa	14
Egypt / Kenya / Ethiopia / Madagascar / Ghana / Algeria	
Oceania	6
Australia / New Zealand / Papua New Guinea / Tonga	
Latin America	2
El Salvador / Argentina	
North America	10
U.S.A. / Canada	
Europe (including NIS)	32
France / Germany / Russia / Spain / Serbia / U.K. / Portugal	
<b>Total</b>	<b>520</b>

**Number of Cooperating Universities**  
As of May 1, 2015

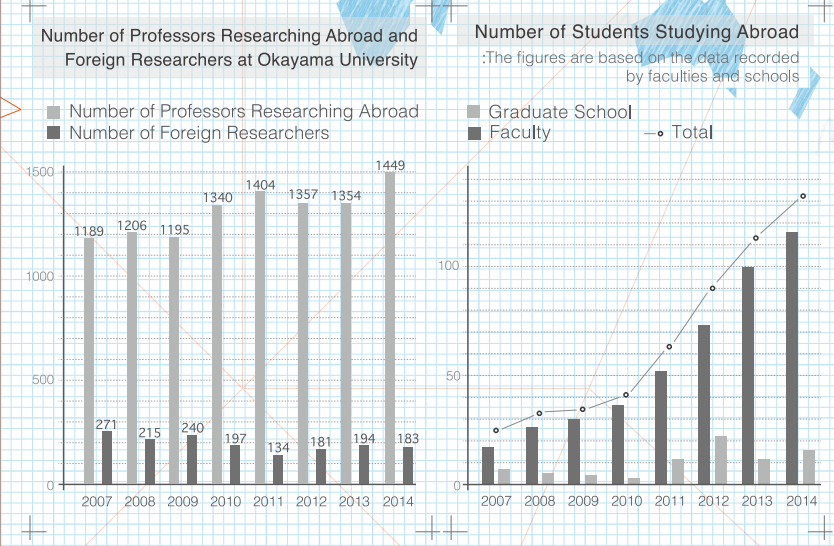
Asia	136
The Middle East	5
Africa	5
Oceania	5
Latin America	4
North America	31
Europe (including NIS)	46
<b>Total 38 Countries / Region</b>	<b>232</b>

The **L-café** is a social learning space where international and Japanese students can interact. Diverse people come together here to learn each other's languages and increase their understanding of other cultures. This is the place where you can establish global connections right on campus.



**OKAYAMA UNIV.**  
GLOBAL GATE FOR LEARNING

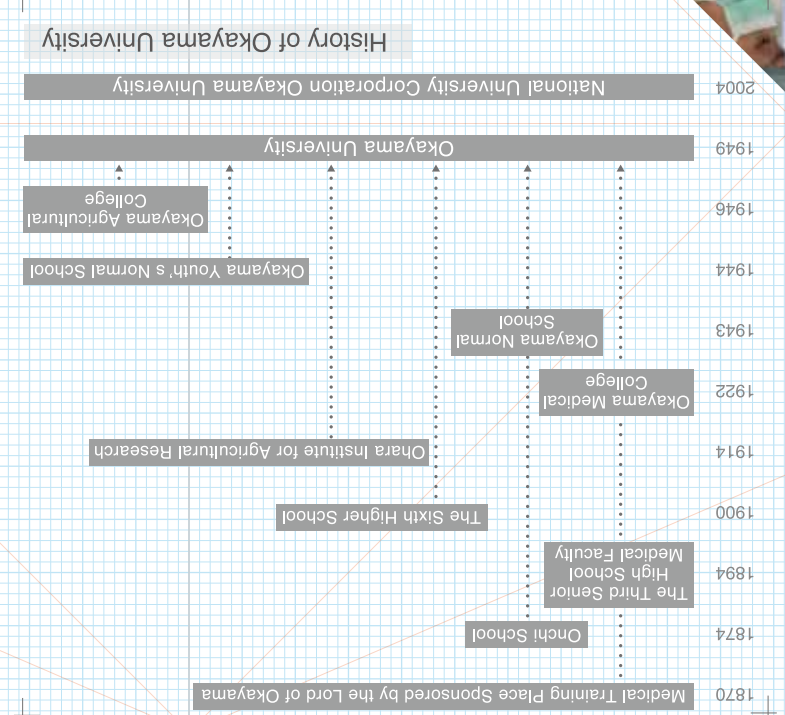
DISCOVER  
OKAYAMA UNIVERSITY



**OKAYAMA UNIVERSITY**  
1-1-1, Tsushima-Naka, Kita-ku, Okayama 700-8530, Japan  
TEL. +81-86-252-1111  
E-mail. www.adm@adm.okayama-u.ac.jp  
URL. http://www.okayama-u.ac.jp

# OKAYAMA + OKAYAMA UNIVERSITY

Okayama Prefecture has a warm climate, and is referred to as "The Land of Sunshine." Because it is relatively free from natural disasters and has good transportation access, Okayama has a reputation as a comfortable place to live. Historical places also abound in Okayama. Korakuen in Okayama City is considered one of the three most beautiful gardens in Japan with a three-star rating in the French Michelin Guide (the highest rating). Okayama Prefecture is proud to have the Bikan Historical Quarter in Kurashiki City, which retains a traditional streetscape, as well as Shizutani School in Bizen City, which was Japan's first school for contemporary art the world over, is also close by. The abundant foods of Okayama, with its great natural resources and bountiful coastline, are another of its attractions. You can savour fresh seafood, delicacies from the mountains, and Okayama's renowned peaches and grapes.



Okayama University Hospital was selected as one of ten hospitals to take part in the "Clinical Research Core Hospitals Project" of the Ministry of Health, Labour and Welfare, and it leads Japan in research support by physician-led clinical trials and clinical research conducted to international standards. It has also been selected as one of the nine bases of MEXT's "Translational Research Network Program," acting as a vital research site to create innovative pharmaceuticals and medical equipment developed in Japan.

Okayama University is one of just nineteen research institutes in Japan. It is engaged in interdisciplinary research at the global forefront, training top researchers of the next generation to lead innovative research and development.